

# Installation Guide

This guide provides information on the correct procedures for the installation of NRG Greenboard™. The details are provided to assist carpenters/ installers and cover most common applications.

## 1 START

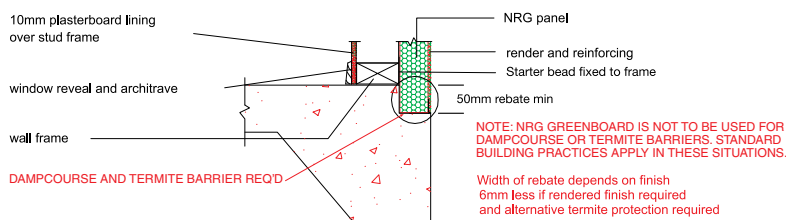
**(A)** Before commencing to fix NRG panels check that

- The frames are straight and plumb
- All windows and flashing are correctly installed
- Breathable sarking has been fitted
- Solid back blocking where required

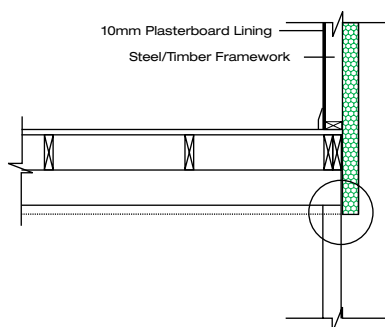
Consideration should be given to the installation of wall mounting accessories i.e. taps, electrical, fittings etc. It is important to allow for adequate back blocking for these items.

**(B)** POSITIONING OF STARTER BEAD:

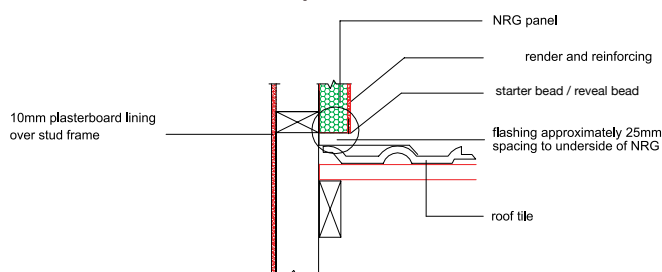
### INTO A REBATE FOR SLAB DETAIL



### INTO BEARER/ JOIST FOR TIMBER FLOOR DETAIL



### INTO FLASHING FOR ROOF/ WALL DETAIL



## 2

## FIXING / CUTTING / BACK BLOCKING

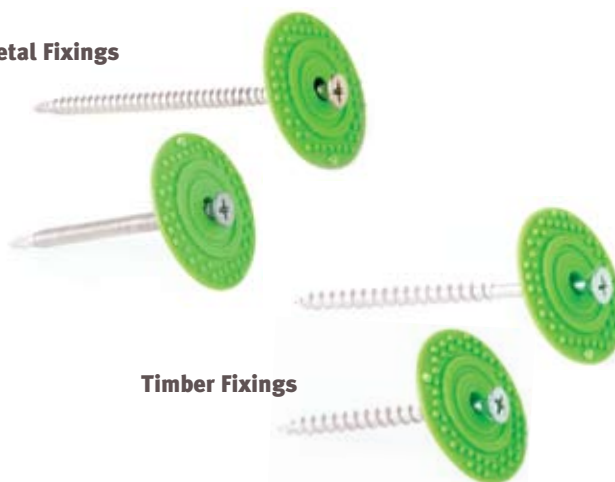
**(A)** NRG panels can be layed horizontally or vertically depending on what suits the job.

- Position NRG panel into starter bead, check for level and fix into studs using NRG washers and screws.
- Standard fixings are 300c vertically and 450c horizontally (refer to fixing table).

NRG Greenboard™ Minimum Stud & Fastener Spacing's				
Regions - Wind Category		Stud Spacings (mm)	Fastener Spacings (mm-Vertically)	Number of Fasteners /m <sub>2</sub>
Non Cyclonic	N1	450	300	12
	N2	450	300	12
	N3	450	300	12
	N4	450	200	18
	N5	450	150	24
Cyclonic	C1	450	200	18
	C2	450	150	24
	C3	450	100	37

\* In accordance with AS1684 – 2006 / AS4005 – 1992

### Metal Fixings



### Timber Fixings

**(B)** Adjoining NRG panels are to be glued on both horizontal and vertical edges using recommended construction adhesive (i.e. NRG Greenboard Adhesive or Soudal Strong As Nails) or an expanda foam.

**(C)** Measure and cut NRG panels using a straight edge and a standard power saw with a masonry diamond blade.

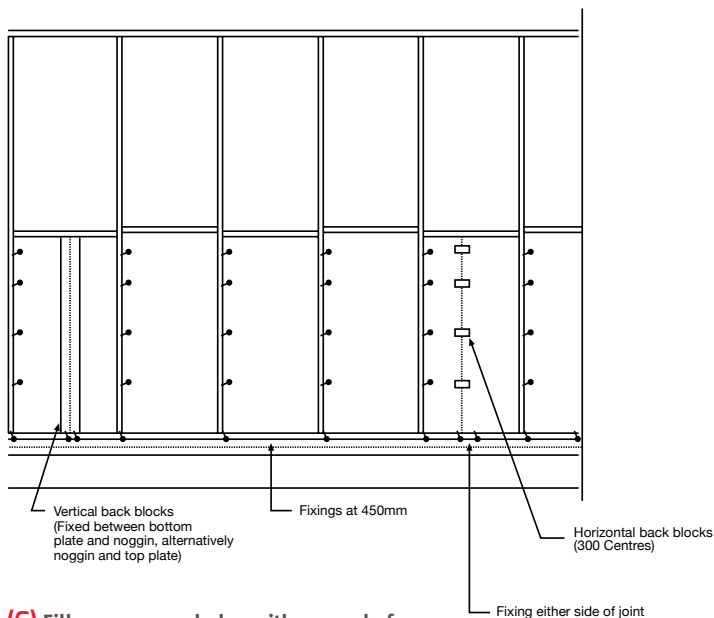
**(D)** At external corners, NRG panels are overlapped the full thickness of the sheets and glued using recommended construction adhesive.

**(E)** Allow a 3mm gap between NRG panels and openings (door, windows) for sealing. It is recommended the straight edge of the sheet be fixed next to the openings for easier sealing.

### BACK BLOCKING

**(F)** Where the NRG panel has a vertical join off a stud it is necessary to back-block as follow.

- Fixing stud material vertically (widest facing outwards) and securing between bottom plate and noggin. Alternately between noggin and top plate, making sure to glue both NRG panels and fix through each panel with screws and washers into back block at 300c.



**(G) Fill any gaps or holes with expanda foam.**

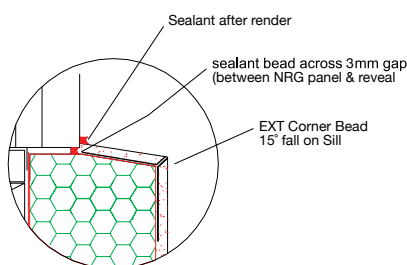
### 3

## BEADING & SEALING

At this point particular care needs to be exercised to ensure that the installation of all beading around windows and doors is completed correctly. This is not a gap filling exercise but an integral part of the total NRG Greenboard™ walling system.

### (A) Rendered Reveals 60mm, 75mm, 100mm Greenboard™

- All sills, heads & jambs to be rendered.
- Using marking tape, accurately adhere to frame of joinery, 4mm from the edge creating a neat parallel margin.
- Using a Primer, and a clean rag, dampen cloth with Primer and quickly clean the window reveal, ready for sealant application.
- Cut a medium size end off the nozzle of the sealant. Apply a bead of sealant into the gap between the Greenboard™ and the taped window reveal. Using a coving tool, neatly create an internal cove finish.

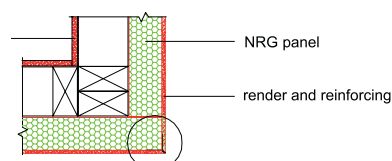


- Remove masking tape from joinery leaving a 100% water proof seal
- This procedure is repeated after rendering and prior to texture coating, to ensure double sealing around windows and doors

### (B) External Beads

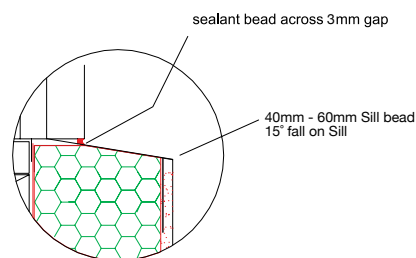
- External points of building, columns etc.
- All sill, head and jambs (60mm, 75mm, 100mm)
- Install external bead by applying a bead of Bostik No More Nailst o internal sides of the bead.

Then press firmly into position, check for plumb and straightness, scraping of excess glue, tacking into position until dry.



### (c) 40mm Reveal Bead

- Allow a 3mm gap between Greenboard™ and opening
- Glue 40mm reveal bead into 3mm gap pressing firmly against the Greenboard™. Make sure there is sufficient glue to fix bead to Greenboard™
- Tape and prime reveal bead and opening reveal. Apply a bead of sealant into the gap between the reveal bead and opening reveal. Smear sealant with tool. Remove tape and Paint.

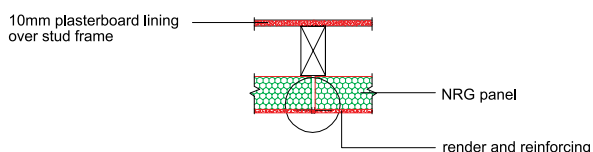


### (d) Expansion Beading Joints

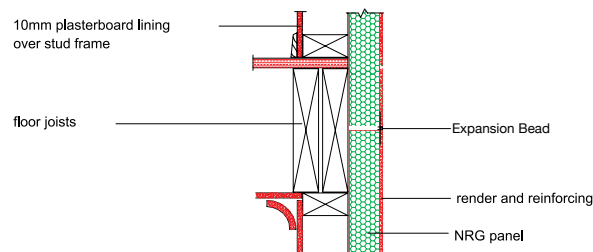
Expansion Joints allow movement within the building & avoid unsightly cracking.

- Vertical Expansion Beading Joints: Every 8 metres (above/ below window)

approximately 8 metres apart



- Horizontal Beading Expansion Joints: Located between floor levels



- Install 'Render Expansion Bead' between both Greenboard™ surfaces, applying a bead of No More Nails to both internal surfaces of bead. Press into position, scrape off excess glue, and tack fix until dry.

### (Expansion Joints) Option 2

- Chalk line after render
- 10mm cut through render and into panel
- Tape either side of joint
- Seal
- Remove tape and Paint



**Free Call 1800 674 001**

**FOR FURTHER INFORMATION CONTACT NRG HEAD OFFICE**

Unit 2, 13-15 Octal Street Yatala Qld 4207

Phone: 07 3382 7742 Fax: 07 3382 7741

email. sales@nrggreenboard.com www.nrggreenboard.com

## PRODUCT STEWARDSHIP PARTNER

Commercial Recycling Agreement with Retail Industry to tackle imported EPS packaging

## STYROCYLE BINS

Free waste drop-off service at the point of manufacturing for the local community and small business

**STYROCYLE**  
— POLYSTYRENE RECYCLING —

## COLLECT

## OFFCUTS FROM PRODUCTION PROCESS

Scrap generated from the manufacturing process is immediately placed into the recycling stream.

## GRANULATION

Waste is first broken down using both manual and automatic granulating processes that goes back into EPS Block.

## SCRAP COLLECTION FROM OUR CUSTOMERS

We collect offcuts, scrap and unused product from our customer building sites, and bring it back for processing.

## RECYCLE

## SHREDDING

Waste is shredded in order for it to be melted back down, pelletised and put back into expanded polystyrene (EPS) products

## PRODUCT COMPONENT FOR RESALE

## NEW PRODUCT

## NRG PRODUCTS NRG Greenboard™ Exterior Wall Cladding

NRG Greenboard™ Underslab Installation  
Used in thermal resistance under slabs (cold rooms etc).

NRG Greenboard™ Greenbatts  
Insulation for new and existing timber floors.

NRG Greenboard™ Sunhoods/Blades  
Shading over windows and doors.